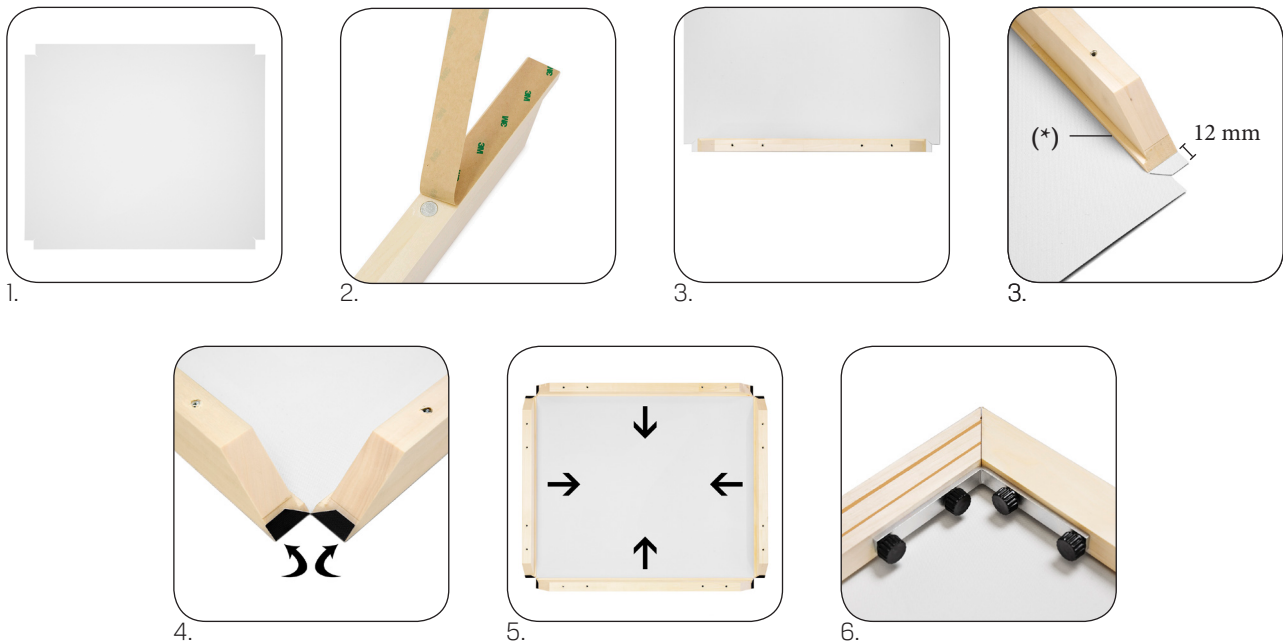


CANVAS PRINT ASSEMBLY INSTRUCTIONS

PHOTOWALL



CONTENTS



See our instruction video:

www.photowall.global/our-products/product-information-canvas-prints

Canvas cloth
Frame sections, qty. 4
Corner plates, qty. 4
Screws, qty. 16
Hanging solution with screws

ASSEMBLY

1. Place the canvas cloth on a clean, flat surface with the print facing down and the back facing up.
2. Remove the protective paper from the tape on one of the frame sections.
3. Position the frame section along one edge of the cloth, centred between the corners of the cloth.
Please note: the protruding section(*) of the frame must point towards the middle of the cloth.
Now smooth your hand along the edge of the frame to firmly attach the cloth to the tape.
Repeat with the other frame sections.
4. Fold the corners of the cloth up towards the tape on the frame sections.
5. Fold the frame sections in towards one another.
6. Position the corner plates in the corners. Now insert all 16 screws and tighten them to make the frame stable and to tension the cloth.

Hang your finished canvas print on the wall using the accompanying hanging solution.

Done!



Share your images with us!

We would love to get a glimpse of your style. Share your images on Instagram with @photowall_sweden and #photowallsweden.